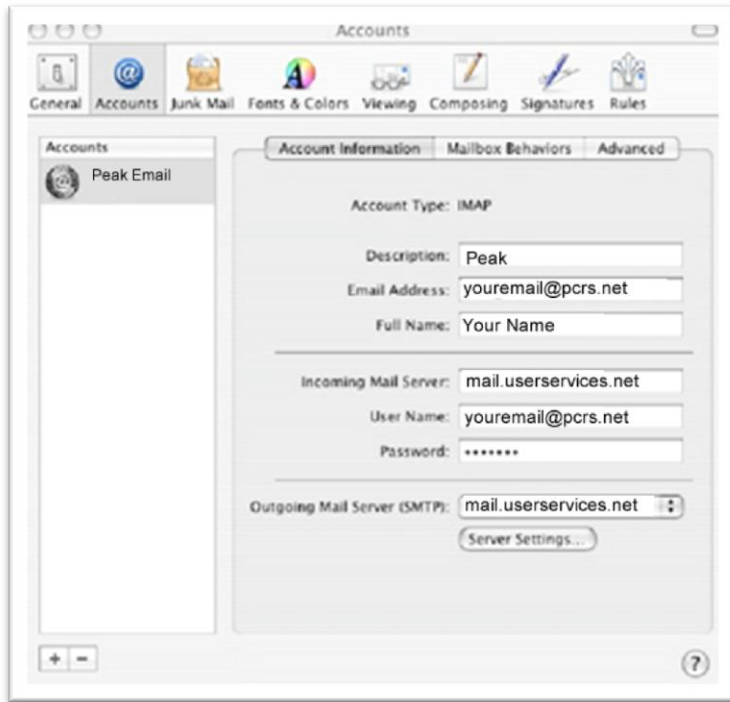


Configure Mac Mail to use SMTP Authentication

Please follow the steps below to configure your Mac Mail program to use **secure**, authenticated SMTP.

1. *Open* the **Mac Mail** program.
2. Under the **Mail menu** *select* **Preferences**. The Accounts window will open.
3. *Click* on the **Accounts** icon at the top of the page.
4. In the left window pane *click* on the name of your **mail account**.
5. At the bottom of the page, in the Outgoing Mail Server (SMTP) section, *click* on **Server Settings**.



6. For **Outgoing Mail Server type**: **mail.userservices.net**
7. In the **Server port** box *type*: 465
8. *Check* the **box** next to **Secure Sockets Layer (SSL)**
9. **Authentication** should be *set* to **Password**.
10. Your user name is your full email address.
11. Enter your password.
12. *Click* **OK**
13. *Close* the Accounts **window**.
14. When prompted *click* **Save**.
15. To make sure the new settings take effect, *close* and then *reopen* the **Mail** program.

Note: we do have standard email settings if you would rather use them than secure settings: Incoming port 110/mail.pcrs.net. Outgoing port 25 or 587/mail.pcrs.net, uncheck Secure Sockets Layer to use these.